

COMMONWEALTH OF KENTUCKY
MEADE COUNTY FISCAL COURT
ORDINANCE NUMBER: 2023-07

AN ORDINANCE PURSUANT TO KRS 67.045 ADOPTING THE REPORT OF THE REAPPORTIONMENT COMMISSION AND REESTABLISHING THE BOUNDARY LINES OF THE EXISTING MAGISTERIAL DISTRICTS, ADOPTING A MAP OF SAME AND FIXING COMPENSATION OF REAPPORTIONMENT COMMISSIONERS.

The full version of this ordinance can be obtained in the Meade County Judge Executive's Office at the Meade County Courthouse, 516 Hillcrest Drive, Brandenburg, KY 40108.

Given First Reading on the 11th day of July, 2023 and approved by at least the majority of the fiscal court members.

This ordinance will be read again considered again, and possibly adopted by the Meade County Fiscal Court in the main courtroom of the Meade County Courthouse 516 Hillcrest Drive, Brandenburg, Kentucky 40108, on the 8th day of August, 2023.

2nd Reading
posted on website: 7-24-2023

Adoption
posted on website: _____

WHEREAS, KRS 67.045(2) requires that the Fiscal Court of Meade County, Kentucky maintain each county magisterial district in a manner so that each such district be drawn so that the districts are compact, contiguous and the population of each district is nearly equal as possible; and

WHEREAS, KRS 67.045(4) requires that the Fiscal Court initiate reapportionment proceedings in May of the first year following the decennial census of the United States, 2020 Census data attached hereto as Exhibit C, and at other times as appropriate; and

WHEREAS, that the Fiscal Court of Meade County has appointed as Reapportionment Commissioners Marie Barr, Nik Powers, and Charlie Wilkins, Sr., representing three existing magisterial districts, and Susan Masterson as County Clerk; and

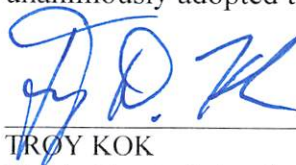
WHEREAS, the Reapportionment Commission filed its report with the Meade Fiscal Court on June 13, 2023, indicating that existing Magisterial Districts are not as equal as possible and therefore recommending changes in such districts.

NOW THEREFORE, be it ORDAINED by the Fiscal Court of Meade County, Kentucky, that the findings of fact and recommendations of the Reapportionment Commission, consisting of Marie Barr, Nik Powers, and Charlie Wilkins, Sr., being citizens of Meade County, Kentucky, over the age of 21 years, and Susan Masterson as Clerk of Meade County, Kentucky, said report being presented to the Fiscal Court on June 13, 2023 and attached hereto as Exhibit A, is hereby adopted, ratified and incorporated herein as if set forth in full, and the boundaries of the Magisterial Districts shall be modified to the boundaries as recommended in such report and depicted and attached hereto as Exhibit B, is hereby ADOPTED.

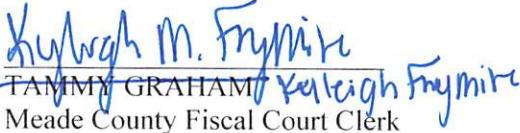
IT IS FURTHER ORDAINED AND ORDERED that said Commissioners, exclusive of the County Clerk, be paid the sum of \$100.00 by the County Treasurer for their services.

IT IS FURTHER ORDAINED that the advertisement of the consideration of this Ordinance, published in accordance with KRS Chapter 424, shall notify any registered voter of Meade County, Kentucky that an action may be brought before the Meade Circuit Court to reverse the provisions of the reapportionment within twenty days of the adoption hereof.

Given first reading on July 11th, 2023 and thereafter given second reading and unanimously adopted this 8th day of August, 2023.



TROY KOK
Meade County Judge Executive

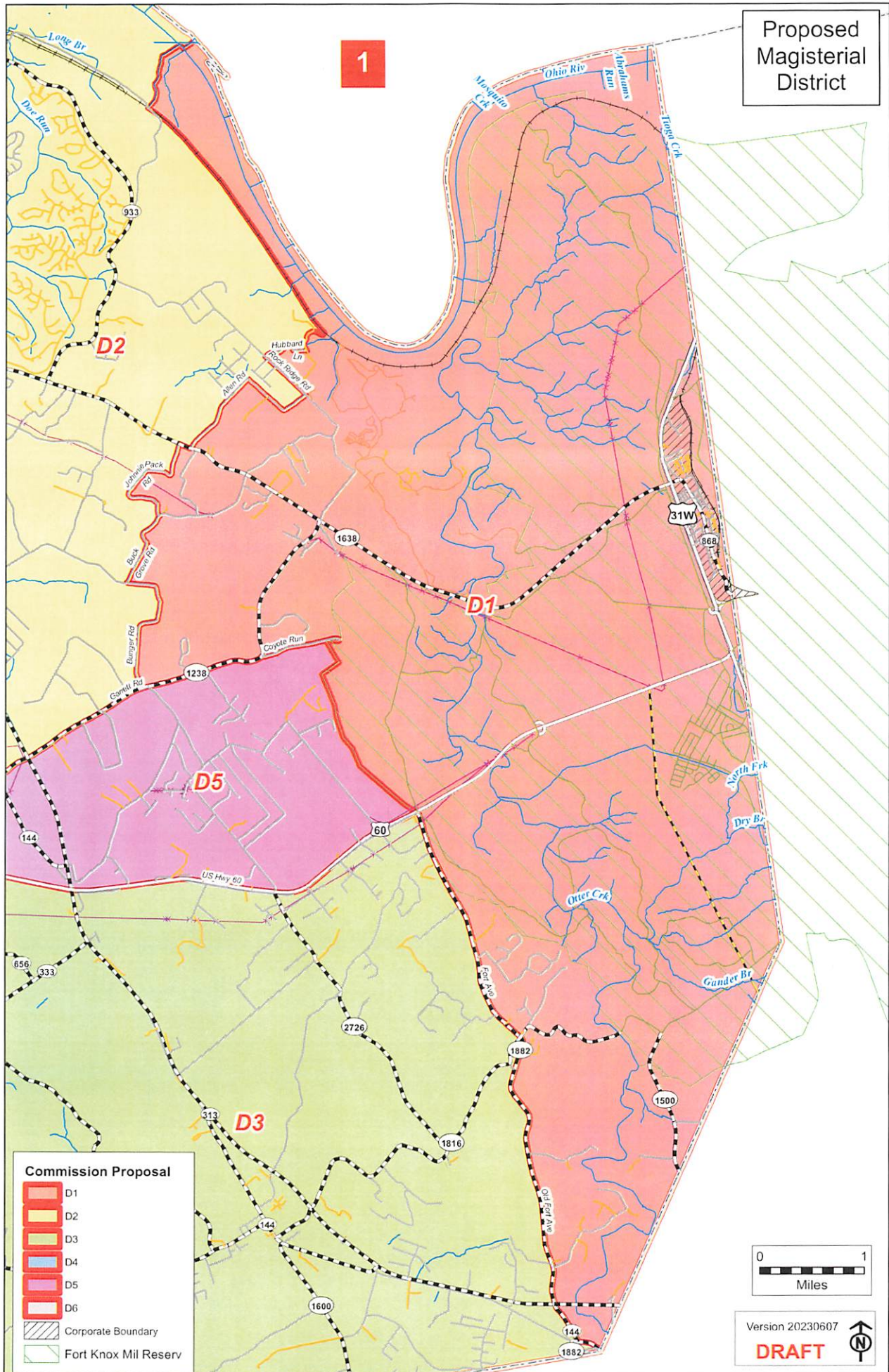

TAMMY GRAHAM
Meade County Fiscal Court Clerk

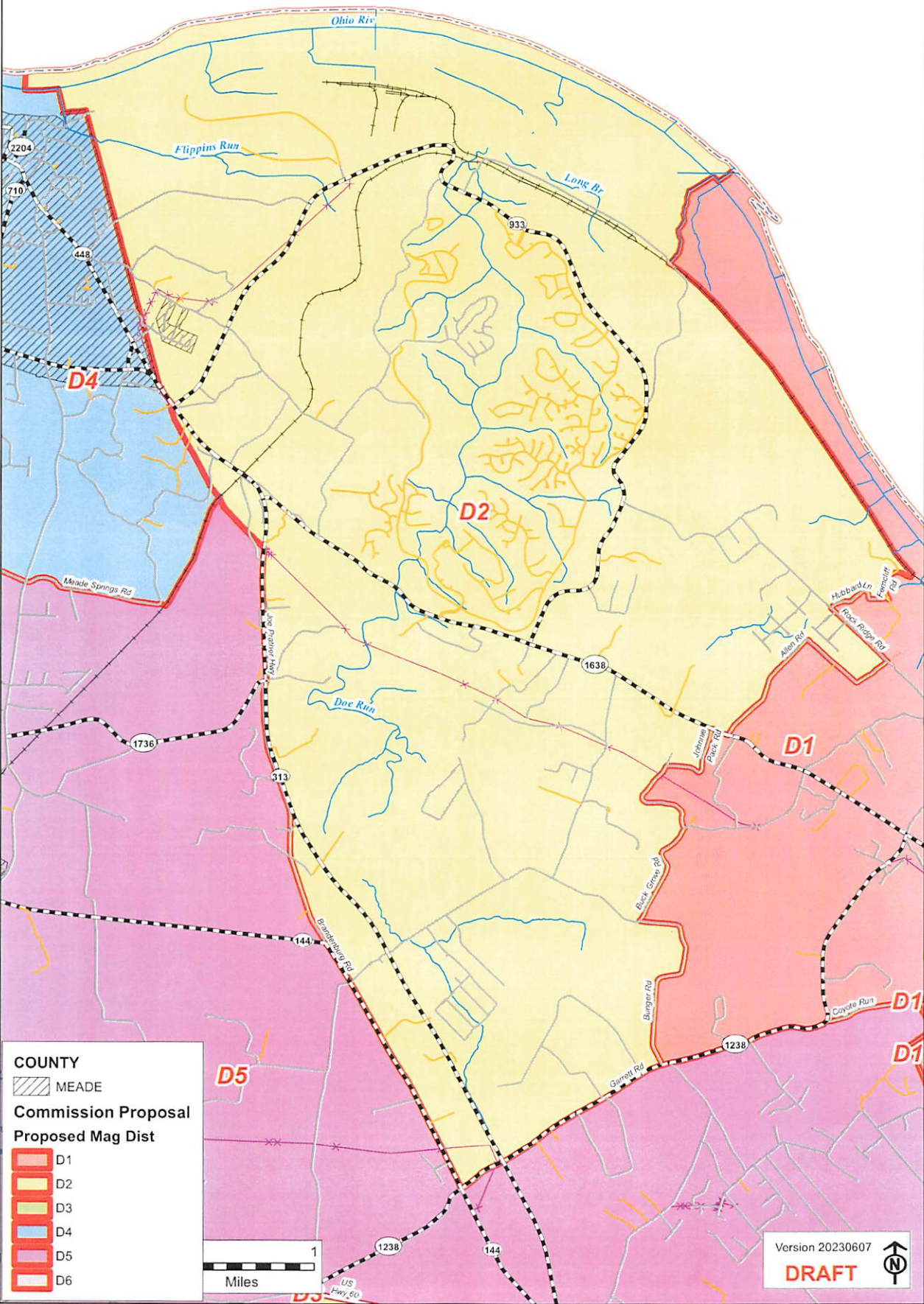
APPROVED AS TO FORM:

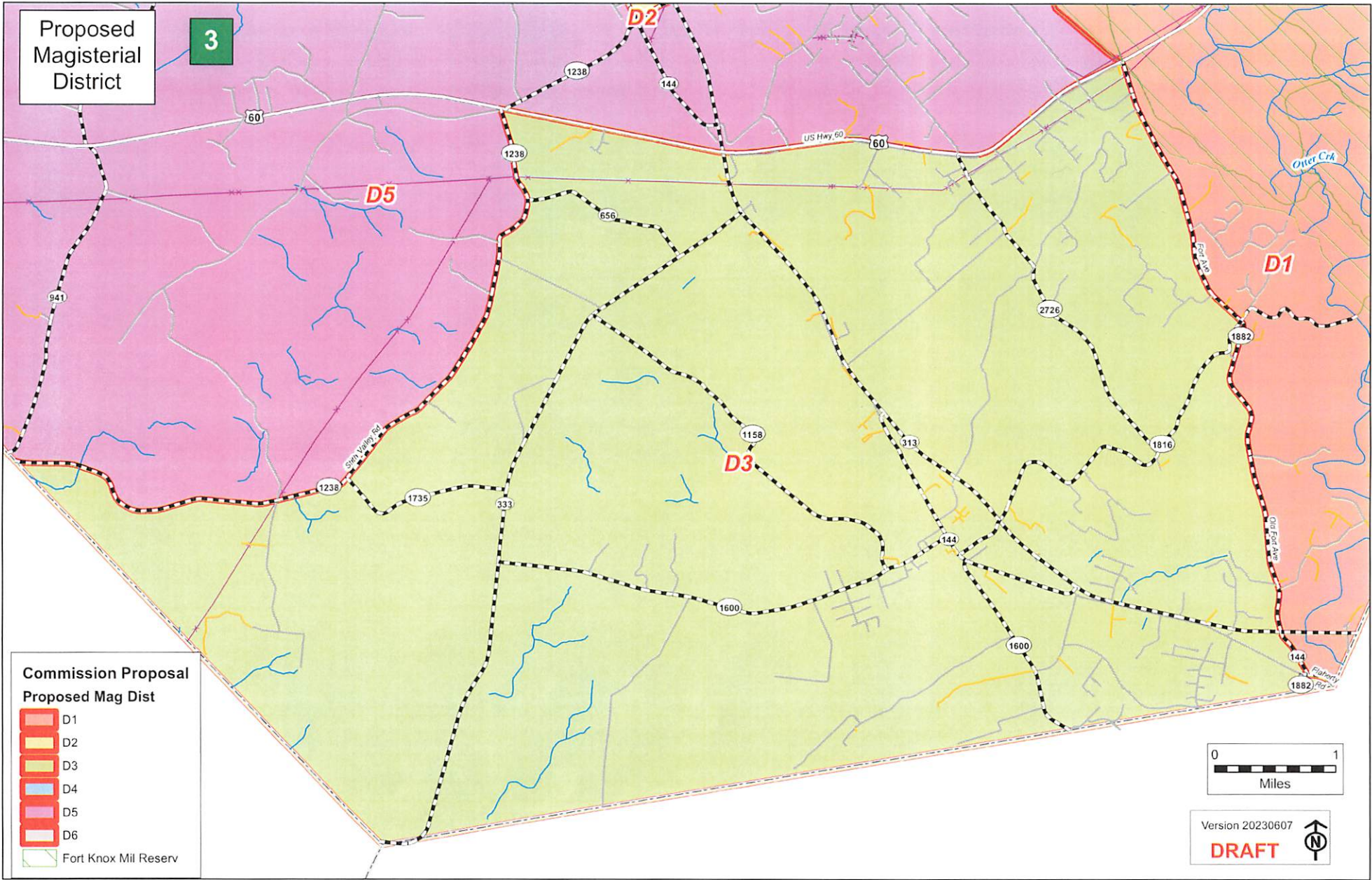


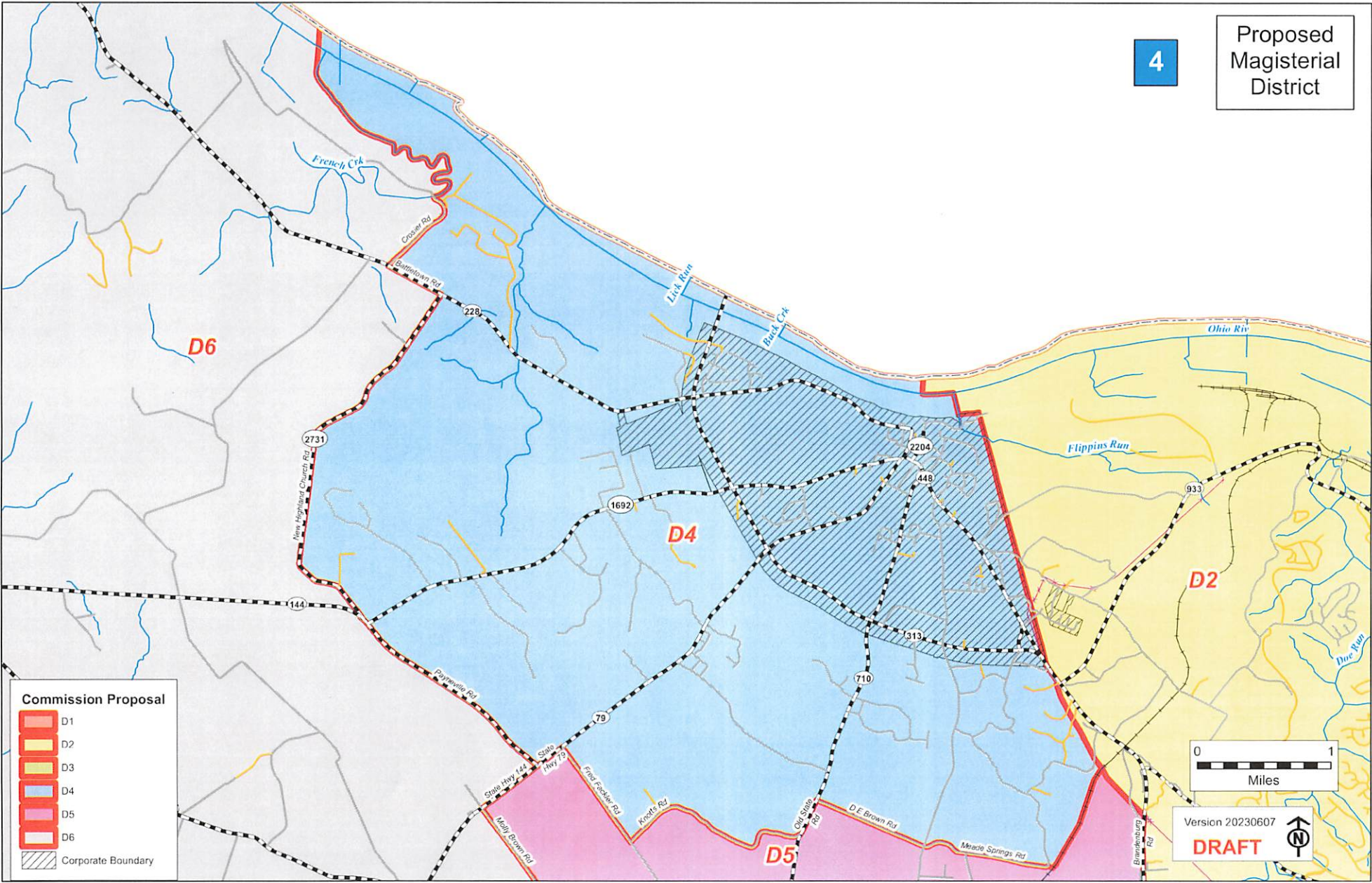
SIDNEY DURHAM
Meade County Attorney

Proposed
Magisterial
District



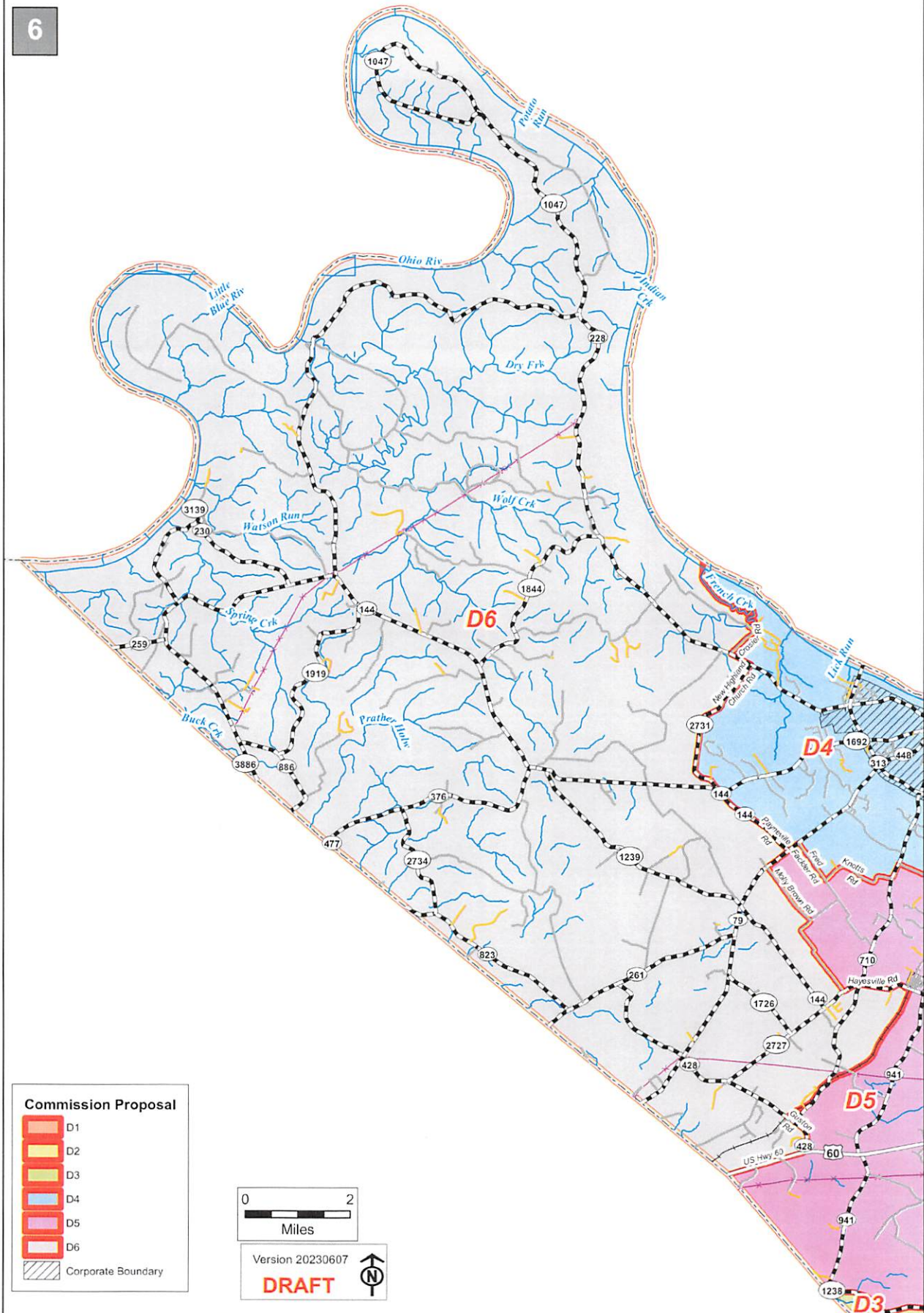






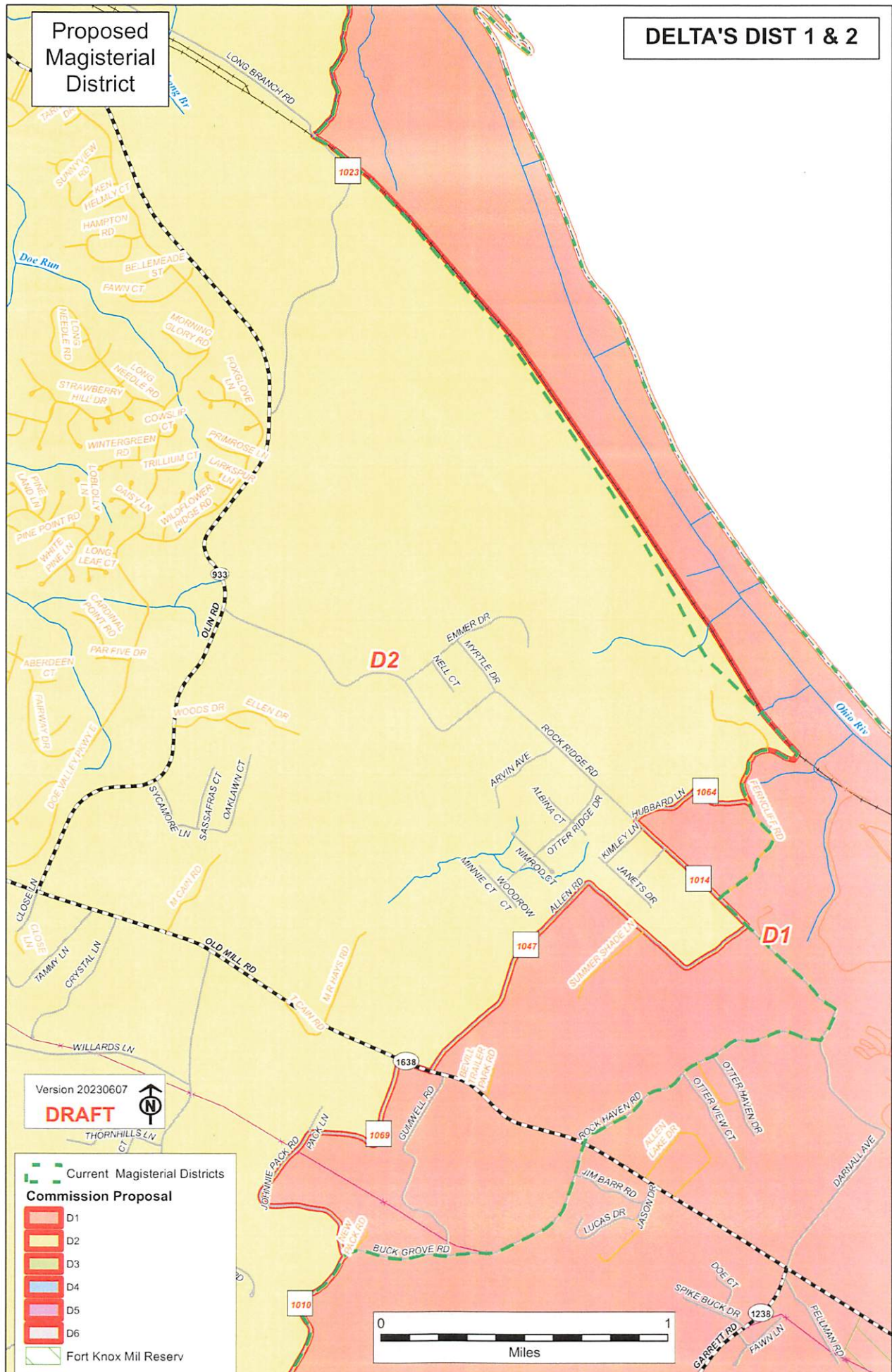
Proposed
Magisterial
District

6

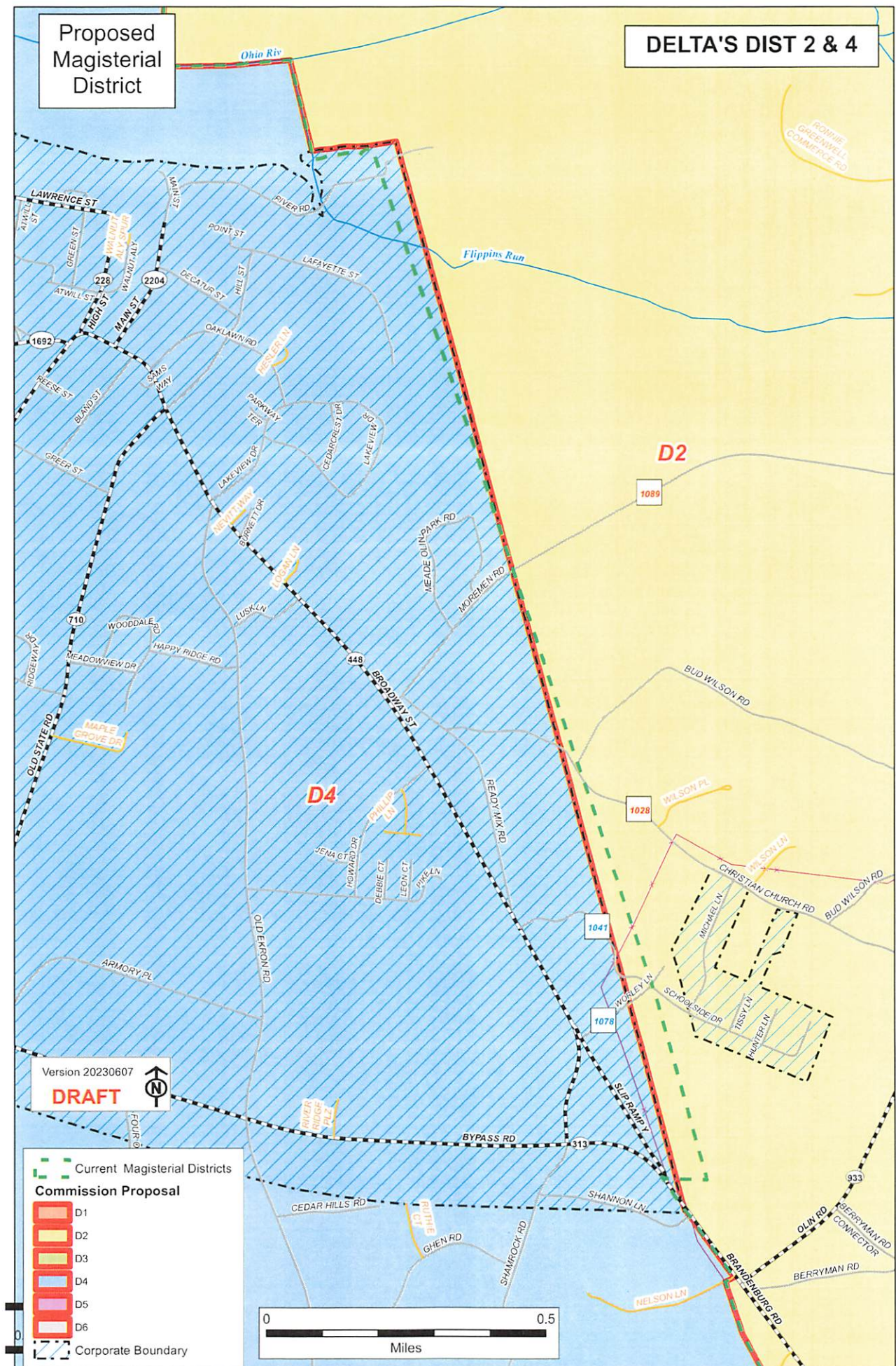


Proposed
Magisterial
District

DELTA'S DIST 1 & 2

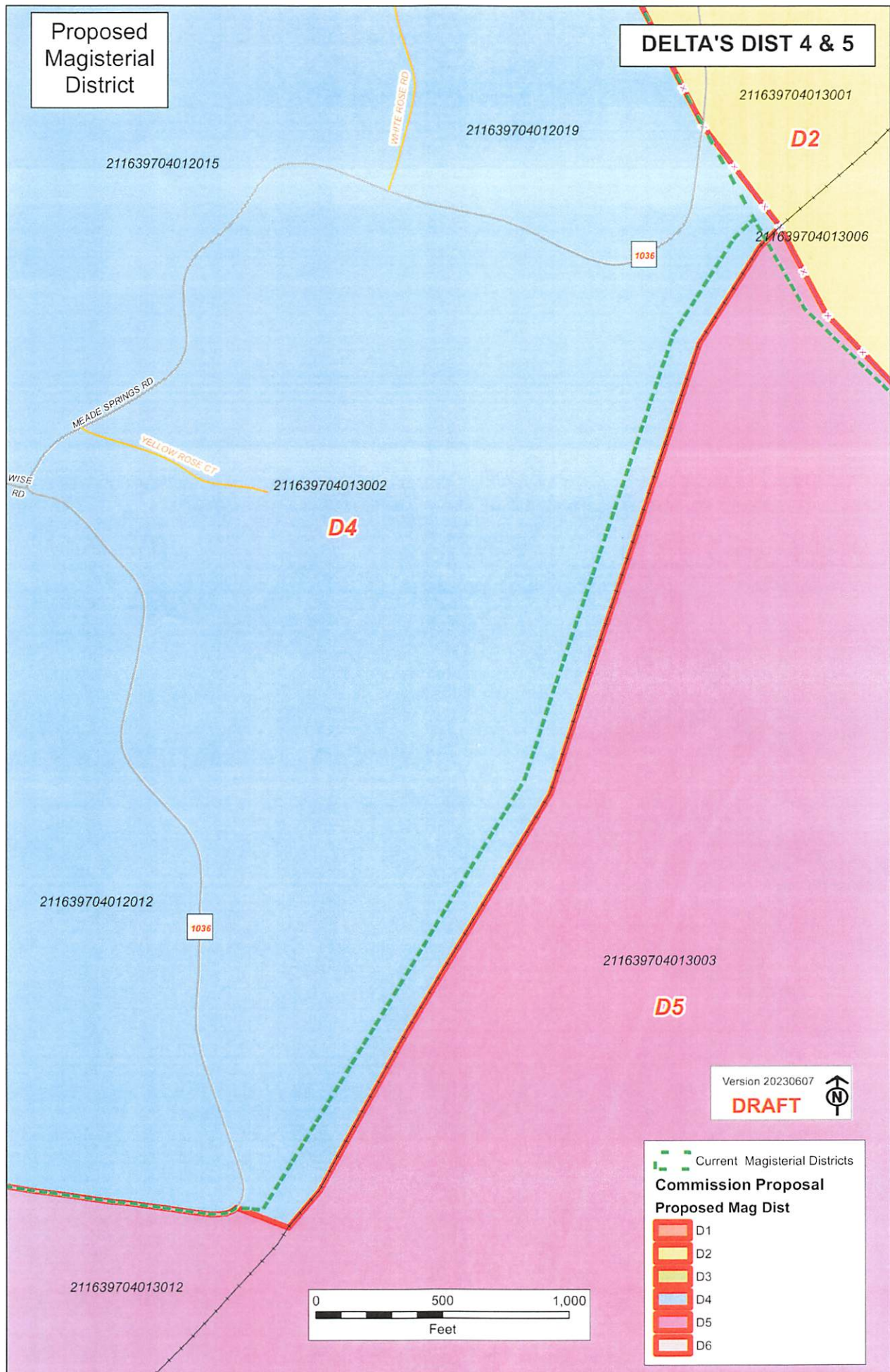


DELTA'S DIST 2 & 4



Proposed
Magisterial
District

DELTA'S DIST 4 & 5



DELTA'S DIST 5 & 6

211639704013026

211639704013025

211639704013023

211639704013037

211639704013028

211639704013024

211639704013021

21163970401/3022

211639704013038

211639704013034

211639704013020

211639704013047

211639704013017

211639704013019

DRAFT



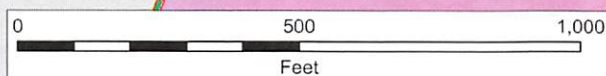
Commission Proposal
Proposed Mag Dist

D2

D4

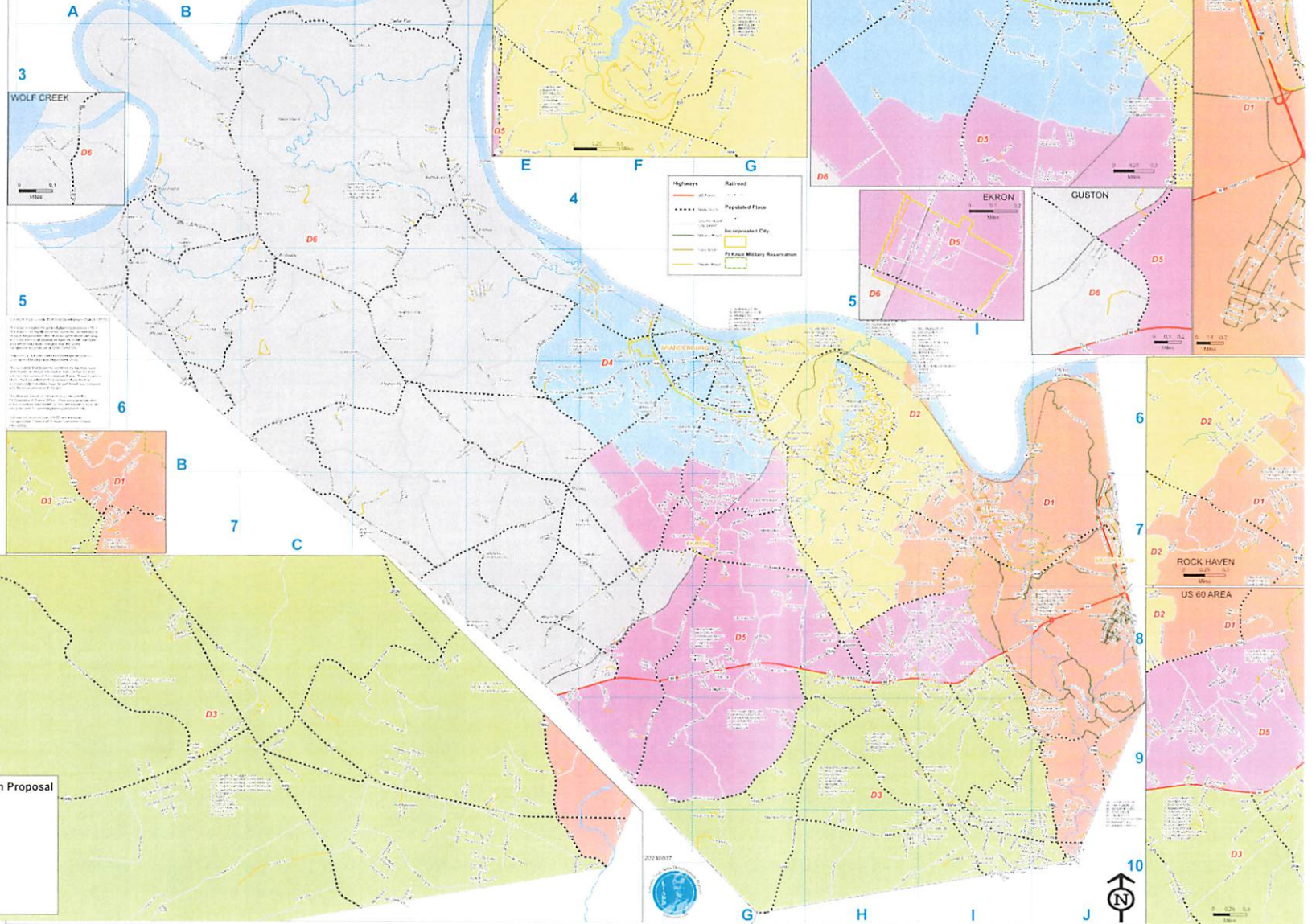
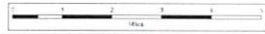
D3

D6

 Corporate Boundary

MEADE COUNTY PROPOSED MAGISTERIAL DISTRICTS

MEADE COUNTY
UNITY AND PROGRESS



Commission Proposal

D1	Orange
D2	Yellow
D3	Light Green
D4	Light Blue
D5	Pink
D6	Light Grey

District 1

Beginning at a point on the Meade/Hardin County line where KY 144 (Flaherty Rd) intersects.

Proceeding northwest along the centerline of KY 144 to the point where it terminates at KY 313 and the intersection of KY 1882 (Fort Ave).

Proceeding north along the centerline of KY 1882 to the point where it terminates at US 60 (Owensboro Hwy) and US Census line L4140 (property line) that represents the western boundary of the Ft. Knox Military Reservation.

Proceeding along the Census line/Reservation boundary to the north to the point where it crosses County Road 1109 (Coyote Run Rd).

Proceeding west along the centerline of County Road 1109, along the southern branch of its "Y" intersection with KY 1238 (Garrett Rd) to the point where it terminates at KY 1238.

Proceeding west along the centerline of KY 1238 to the point where it is intersected by County Road 1106 (Bunger Rd).

Proceeding north along the centerline of County Road 1106 to the point where it terminates at County Road 1010 (Buck Grove Rd).

Proceeding northeast along the centerline of County Road 1010 to the point where it intersects with County Road 1069 (Johnnie Pack Rd).

Proceeding north along the centerline of County Road 1069 to the point where it terminates at KY 1638 (Old Mill Rd).

Proceeding east along the centerline of KY 1638 to the point where it is intersected by County Road 1047 (Allen Rd).

Proceeding northeast along the centerline of County Road 1047 to where it terminates at County Road 1014 (Rock Ridge Rd).

Proceeding northwest along the centerline of County Road 1014 to where it is intersected by County Road 1064 (Hubbard Ln).

Proceeding northeast along the centerline of County Road 1064 to where it terminates at a private road PV-1007 (Ferncliff Rd) which is also the boundary between Census Block 211639704041008 and 211639704041013.

Proceeding northwest along the centerline of the private road, Ferncliff Rd (PV-1007) and the western boundary of Census Block 211639704041008, approximately 1,160ft then leaving Ferncliff Rd and continuing along the Census Block boundary to a point where it intersects with the CSX railroad track which is also the southern boundary of Census Block 211639704041001.

PROPOSED Meade County Magisterial District Boundaries – June 7, 2023

Note for clarification: This places the address of 390 Ferncliff Rd in District 1 and 660 Ferncliff Rd in District 2.

Proceeding northwest along the centerline of the CSX railroad track and the southern boundary of Census Block 211639704041001 to a point where it crosses County Road 1023 (Long Branch Rd).

Leaving the railroad track and proceeding north along the centerline of an unnamed stream that is also the western boundary of Census Block 211639704041001.

Crossing the southern edge of the Ohio River and proceeding across the Ohio River along the western edge of Census Block 211639704041000 to the Indiana state boundary.

Proceeding east along the Indiana State boundary to a point where it is intersected by the Meade/Hardin County line.

Proceeding south along the Meade/Hardin County line to the point of beginning.

District 2

Beginning at a point on the Kentucky/Indiana boundary which is also the western boundary of Census Block 211639704031000.

Proceeding across the Ohio River along the western edge of Census Block 211639704031000 to Census Block 211639704031001 which is the eastern side of the confluence of Flippins Run and the Ohio River. This is also on the northeast corner of the corporate boundary of the City of Brandenburg.

Proceeding east then south along the corporate boundary of the City of Brandenburg and the eastern edge of the following Census Blocks sequentially: 211639704031001, 211639704031003, 211639704031010, 211639704031025, 211639704031024 to a point where the corporate boundary crosses County Road 1089 (Moremen Rd).

Continuing south along the corporate boundary of the City of Brandenburg and the eastern edge of the following Census Block 211639704031032 to a point where the corporate boundary crosses County Road 1028 (Christian Church Rd).

Continuing south along the corporate boundary of the City of Brandenburg and the eastern edge of the following Census Block 211639704031037 to a point where the corporate boundary crosses City Street 1041 (Schoolside Dr).

Continuing south along the corporate boundary of the City of Brandenburg and the eastern edge of the following Census Block 211639704031036 to a point on the corporate boundary where it crosses City Street 1078 (Worley Ln).

Continuing south along the corporate boundary of the City of Brandenburg and the eastern edge of the following Census Block 211639704031041 to a point where it intersects KY 313 (Bypass Rd).

Proceeding south along the centerline of KY 313 (Bypass Rd becoming Brandenburg Rd) to a point where it is intersected by a private lane, Nelson Ln.(PV-1000.)

Proceeding west along the centerline of the private lane, Nelson Ln to a point where it is crossed by a Census line L4020, power line.

Proceeding south along this Census line L4020, power line, continuing across the CSX railroad tracks to a point where it crosses KY 313 (Brandenburg Rd) approximately 1.21 miles from the private lane, Nelson Ln.

Proceeding south along the centerline of KY 313 to its intersection with KY 1736 (Doe Run – Ekron Rd) and County Road 1020 (Doe Run Inn Rd) which is also the northeast corner of Census Block 211639704013004.

Proceeding south along the eastern boundary of Census Block 211639704013004 approximately 470 ft to a point where it crosses County Road 1344 (Brandenburg Rd).

Proceeding south along the centerline of County Road 1344 to its terminus at KY 144 (Brandenburg Rd heading south and Haysville Rd heading west)

Proceeding south along the centerline of KY 144 (Brandenburg Rd) to its intersection with KY 1238 (Garrett Rd).

Proceeding east along the centerline of KY 1238 to the point where it is intersected by County Road 1106 (Bunger Rd).

Proceeding north along the centerline of County Road 1106 to the point where it terminates at County Road 1010 (Buck Grove Rd).

Proceeding northeast along the centerline of County Road 1010 to the point where it intersects with County Road 1069 (Johnnie Pack Rd).

Proceeding north along the centerline of County Road 1069 to the point where it terminates at KY 1638 (Old Mill Rd).

Proceeding east along the centerline of KY 1638 to the point where it is intersected by County Road 1047 (Allen Rd).

Proceeding northeast along the centerline of County Road 1047 to where it terminates at County Road 1014 (Rock Ridge Rd).

Proceeding northwest along the centerline of County Road 1014 to where it is intersected by County Road 1064 (Hubbard Ln).

Proceeding northeast along the centerline of County Road 1064 to where it terminates at a private road PV-1007 (Ferncliff Rd) which is also the boundary between Census Block 211639704041008 and 211639704041013.

Proceeding northwest along the centerline of the private road, Ferncliff Rd (PV-1007) and the western boundary of Census Block 211639704041008, approximately 1,160ft then leaving Ferncliff Rd and continuing along the Census Block boundary to a point where it intersects with the CSX railroad track which is also the southern boundary of Census Block 211639704041001.

Note for clarification: This places the address of 390 Ferncliff Rd in District 1 and 660 Ferncliff Rd in District 2.

Proceeding northwest along the centerline of the CSX railroad track and the southern boundary of Census Block 211639704041001 to a point where it crosses County Road 1023 (Long Branch Rd).

Leaving the railroad track and proceeding north along the centerline of an unnamed stream that is also the western boundary of Census Block 211639704041001.

PROPOSED Meade County Magisterial District Boundaries – June 7, 2023

Crossing the southern edge of the Ohio River and proceeding across the Ohio River along the western edge of Census Block 211639704041000 to the Indiana state boundary.

Proceeding west along the Indiana State boundary to the point of beginning.

District 3

Beginning at a point on the Meade/Hardin County line where KY 144 (Flaherty Rd) intersects.

Proceeding northwest along the centerline of KY 144 to the point where it terminates at KY 313 and the intersection of KY 1882 (Fort Ave).

Proceeding north along the centerline of KY 1882 to the point where it terminates at US 60 (Owensboro Hwy) and US Census line L4140 (property line) that represents the western boundary of the Ft. Knox Military Reservation.

Proceeding west along the centerline of US 60 to the point where it is intersected by KY 1238 (Stith Valley Rd).

Proceeding south along the centerline of KY 1238 to the point where it intersects the Meade/Breckinridge County boundary.

Proceeding south along the Meade/Breckinridge County line to the point where they intersect the Hardin County Boundary.

Proceeding east along the Meade/Hardin County line to the point of beginning.

District 4

Beginning at a point on the Kentucky/Indiana boundary which is also the western boundary of Census Block 211639704031000.

Proceeding across the Ohio River along the western edge of Census Block 211639704031000 to Census Block 211639704031001 which is the eastern side of the confluence of Flippins Run and the Ohio River. This is also on the northeast corner of the corporate boundary of the City of Brandenburg.

Proceeding east then south along the corporate boundary of the City of Brandenburg and the eastern edge of the following Census Blocks sequentially: 211639704031001, 211639704031003, 211639704031010, 211639704031025, 211639704031024 to a point where the corporate boundary crosses County Road 1089 (Moremen Rd).

Continuing south along the corporate boundary of the City of Brandenburg and the eastern edge of the following Census Block 211639704031032 to a point where the corporate boundary crosses County Road 1028 (Christian Church Rd).

Continuing south along the corporate boundary of the City of Brandenburg and the eastern edge of the following Census Block 211639704031037 to a point where the corporate boundary crosses City Street 1041 (Schoolside Dr).

Continuing south along the corporate boundary of the City of Brandenburg and the eastern edge of the following Census Block 211639704031036 to a point on the corporate boundary where it crosses City Street 1078 (Worley Ln).

Continuing south along the corporate boundary of the City of Brandenburg and the eastern edge of the following Census Block 211639704031041 to a point where it intersects KY 313 (Bypass Rd).

Proceeding south along the centerline of KY 313 (Bypass Rd becoming Brandenburg Rd) to a point where it is intersected by a private lane, Nelson Ln.(PV-1000.)

Proceeding west along the centerline of the private lane, Nelson Ln to a point where it is crossed by a Census line L4020, power line.

Proceeding south along this Census line L4020, power line, to a point where it crosses the CSX railroad tracks.

Proceeding southwest along the CSX railroad tracks approximately 0.834 miles to a point where it is intersected the boundary between Census Blocks 211639704013002 and 211639704013012. This point lies approximately 220 ft southwest from the apex of the 90° turn of County Road 1036 (Meade Springs Rd).

Proceeding northwest along the boundary between Census Blocks 211639704013002

and 211639704013012 to the point where it intersects County Road 1036.

Proceeding west along the centerline of County Road 1036 to its termination at County Road 1002 (Old Ekron Rd) and County Road 1044 (D E Brown Rd).

Proceeding west along the centerline of County Road 1044 to its termination at KY 710 (Old State Rd).

Proceeding south along the centerline of KY 710 to a point where it is intersected by County Road 1038 (Knotts Rd).

Proceeding west along the centerline of County Road 1038 to its termination at County Road 1206 (Fred Fackler Rd).

Proceeding north along the centerline of County Road 1206 to its termination at KY 79.

Proceeding south along the centerline of KY 79 to a point where it is intersected by KY 144 (Payneville Rd).

Proceeding north along the centerline of KY 144 to a point where it is intersected by the northern most Y leg of KY 2731 (New Highland Church Rd).

Proceeding north along the centerline of KY 2731 to a point where it is intersected by KY 228 (Battletown Rd).

Proceeding northwest along the centerline of KY 228 to a point where it is intersected by County Road 1300 (Crosier Bottom Rd).

Proceeding north along the centerline of County Road 1300 to a point where it crosses French Creek. Approximately 0.75 miles.

Proceeding downstream (north then west) along French Creek to its confluence with the Ohio River.

Proceeding across the Ohio River along the boundary between Census Blocks 211639704032000 and 211639705001000 to the intersection of the Indiana State boundary.

Proceeding south and east along the Indiana State boundary to the point of beginning.

District 5

Beginning at a point on the Meade/Breckinridge County line where it is intersected by KY 1238 (Stith Valley Rd).

Proceeding east along the centerline of KY 1238 to a point where it intersects US 60 (Owensboro Hwy).

Proceeding east along the centerline of US 60 to a point where it is intersected by KY 1882 (Fort Ave) and US Census line L4140 (property line) that represents the western boundary of the Ft. Knox Military Reservation.

Proceeding along the Census line/Reservation boundary to the north to the point where it crosses County Road 1109 (Coyote Run Rd).

Proceeding west along the centerline of County Road 1109, along the southern branch of its "Y" intersection with KY 1238 (Garrett Rd) to the point where it terminates at KY 1238.

Proceeding west along the centerline of KY 1238 to the point where it crosses KY 144 (Brandenburg Rd).

Proceeding north along the centerline of KY 144 to the point where it is intersected by County Road 1344 (Brandenburg Rd).

Proceeding north along the centerline of County Road 1344 to a point where it crosses Census Block 211639704013004 approximately 440 ft south of its terminus with 1736 (Doe Run – Ekron Rd).

Proceeding north along the eastern boundary of Census Block 211639704013004 approximately 470 ft to a point where it crosses KY 313 (Brandenburg Rd).

Proceeding north along the centerline of KY 313 to a point where it is crossed by a Census line L4020, power line. Approximately 445 ft north of its intersection with County Road 1035 (Top Hill Rd).

Proceeding northwest along the Census line L4020 which is also the northern boundary of Census Blocks 211639704013005 and 211639704013003 to a point where it crosses the CSX railroad track.

Proceeding southwest along the CSX railroad tracks approximately 0.834 miles to a point where it is intersected by the boundary between Census Blocks 211639704013002 and 211639704013012. This point lies approximately 220 ft southwest from the apex of the 90° turn of County Road 1036 (Meade Springs Rd).

Proceeding northwest along the boundary between Census Blocks 211639704013002 and 211639704013012 to the point where it intersects County Road 1036.

Proceeding west along the centerline of County Road 1036 to its termination at County Road 1002 (Old Ekron Rd) and County Road 1044 (D E Brown Rd).

Proceeding west along the centerline of County Road 1044 to its termination at KY 710 (Old State Rd).

Proceeding south along the centerline of KY 710 to a point where it is intersected by County Road 1038 (Knotts Rd).

Proceeding west along the centerline of County Road 1038 to its termination at County Road 1206 (Fred Fackler Rd).

Proceeding north along the centerline of County Road 1206 to its termination at KY 79.

Proceeding southwest along the centerline of KY 79 to a point where it is intersected by County Road 1208 (Molly Brown Rd).

Proceeding south along the centerline of County Road 1208 to the point where it terminates at KY 144 (Haysville Rd).

Proceeding east along the centerline of KY 144 to a point where it intersects the western edge of the City of Ekron corporate boundary which is also a point on the northwest corner of Census Block 211639704013020 which lies on the south side of KY 144 and serves as the western and southern boundary of the City of Ekron corporate limits along this section.

Proceeding south and east around the City of Ekron corporate boundary and Census Block 211639704013020 to the point where they are crossed by the CSX railroad track.

Note for clarification: This places the address of 2705 Haysville Rd in D5 vs. previously D6 due to Census Block correction for Corporate Boundary.

Proceeding south along the CSX railroad track to the point where it is crossed by KY 428 (Guston Rd).

Proceeding south along the centerline of KY 428 to the point where it terminates at US 60 (Owensboro Hwy).

Proceeding west along the centerline of US 60 to the point where it crossed the Meade/Breckinridge County line.

Proceeding southeast along the Meade/Breckinridge County line to the point of beginning.

District 6

Beginning at a point on the Meade/Breckinridge County where it is intersected by US 60 (Owensboro Hwy).

Proceeding east along the centerline of US 60 to the point where it is intersected by 428 (Guston Rd).

Proceeding north along the centerline of KY 428 to the point where it is crossed by the CSX railroad track.

Proceeding east along the CSX railroad track to a point where it crosses the City of Ekron corporate Boundary and Census Block 211639704013020 which lies on the south side of KY 144 (Haysville Rd) and serves as the western and southern boundary of the City of Ekron corporate limits along this section.

Proceeding west then north along the City of Ekron corporate boundary and the northern boundary of Census Block 211639704013020 to a point where they are crossed by KY 144 (Haysville Rd).

Note for clarification: This places the address of 2705 Haysville Rd in D5 vs. previously D6 due to Census Block correction for Corporate Boundary.

Proceeding east along the centerline of KY 144 to a point where it is intersected by County Road 1208 (Molly Brown Rd).

Proceeding north along the centerline of County Road 1208 to a point where it terminates at KY 79.

Proceeding east along the centerline of KY 79 to a point where it is intersected by KY 144 (Payneville Rd).

Proceeding north along the centerline of KY 144 to a point where it is intersected by the northern most Y leg of KY 2731 (New Highland Church Rd).

Proceeding north along the centerline of KY 2731 to a point where it is intersected by KY 228 (Battletown Rd).

Proceeding northwest along the centerline of KY 228 to a point where it is intersected by County Road 1300 (Crosier Bottom Rd).

Proceeding north along the centerline of County Road 1300 to a point where it crosses French Creek. Approximately 0.75 miles.

Proceeding downstream (north then west) along French Creek to its confluence with the Ohio River.

Proceeding across the Ohio River along the boundary between Census Blocks 211639704032000 and 211639705001000 to the intersection of the Indiana State boundary.

Proceeding north and west along the Indiana State boundary to a point where it is intersected by the Meade/Breckinridge County line.

Proceeding southeast along the Meade/Breckinridge County line to the point of beginning.

REPORT OF
COMMISSIONERS FOR REAPPORTIONING
MAGISTERIAL, COMMISSIONER AND CONSTABLE DISTRICTS OF
MEADE COUNTY

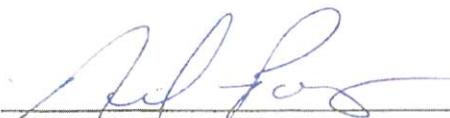
DATED AT BRANDENBURG, KENTUCKY ON JUNE 6, 2023

We, the undersigned, Charlie Wilkins, Sr., Nik Powers and Marie Barr having been appointed and approved by the Meade County Fiscal Court on May 9, 2023 to serve along with Susan Masterson, Meade County Clerk who serves as a non-voting member, for the purpose of reapportioning the Magisterial, Commissioner and Constable Districts of Meade County, Kentucky, and after having examined the existing boundary lines of the six districts of Meade County, Kentucky do hereby file with the Meade County Fiscal Court, a report showing the boundaries of each new district and estimated population contained in each.

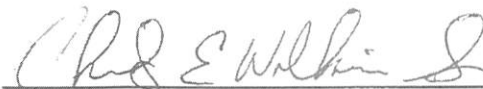
WITNESS OUR HANDS this 6 day of June, 2023.



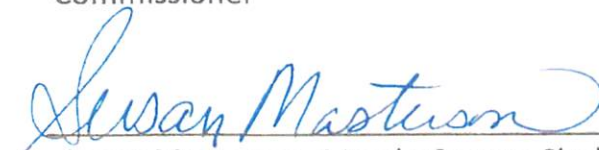
Commissioner



Commissioner



Commissioner



Susan Masterson, Meade County Clerk